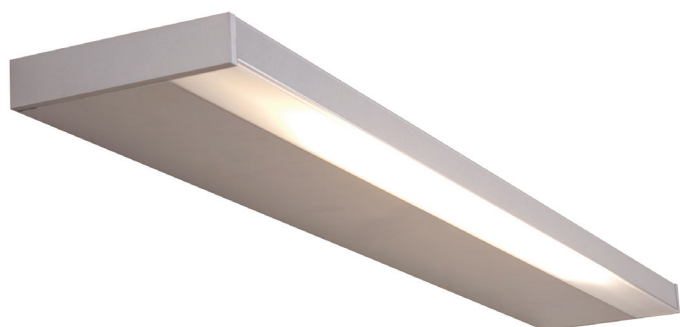


AL 4065 LED



Colour(s)



WALL MOUNTED ■ LED

- Wall mounted luminaire with direct and indirect lighting for Linear LED module, maximum 6 255 lumens
- CRI of 80
- MacAdam Ellipse: 3 SDCM
- Available in 3 000 K and 4 000 K
- Up to 50 000 hours lamp life (L80B50)
- Luminous efficiency of system up to 158,8 lm/W
- Direct lighting diffuser made of satiny polycarbonate
- Indirect lighting diffuser made of clear polycarbonate
- Reflector made of MIRO 20 Silver® aluminium
- Profile made of painted aluminium
- Static heat sink
- **Weight:** approx. 4,5 kg (1050 mm), 6 kg (1300 mm)
- **Power/ Number of Feet(s):** 2 FTs for direct lighting, 3 FTs or 4 FTs for indirect lighting
- **Driver(s):** Fixed (C Fixed), Dimmable driver DALI (CDIMMDALI)

Driver(s)



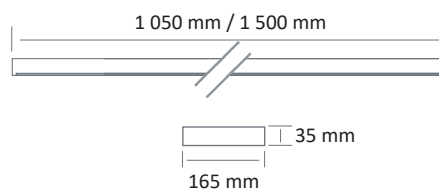
Standards

Class I | IP 20 | 650°

Beam(s)



Dimensions



ITEM	TYPE	POWER	CONSUMPTION	LUMINOUS FLUX	SYSTEM EFFICIENCY	COLOUR TEMPERATURE	CRI	EFFICIENCY ENERGY CLASS
AL 4065-LED 5000-830	General lighting	28,7 W (3 Ft)	33,2 W	5039 lumens	151,9 lm/W	3000	80	C
AL 4065-LED 6300-840	General lighting	35,3 W (3 Ft)	40,8 W	6255 lumens	153,4 lm/W	4000	80	C
AL 4065-LED 3500-830	General lighting	23,7 W (3 Ft)	27,9 W	3470 lumens	124,5 lm/W	-	80	C
AL 4065-LED 4600-840	General lighting	31,6 W (4 Ft)	35,1 W	4630 lumens	132 lm/W	-	80	C
AL 4065-LED 1700-830	Reading lighting	8,9 W (2 Ft)	10,8 W	1710 lumens	158,8 lm/W	3000	80	C