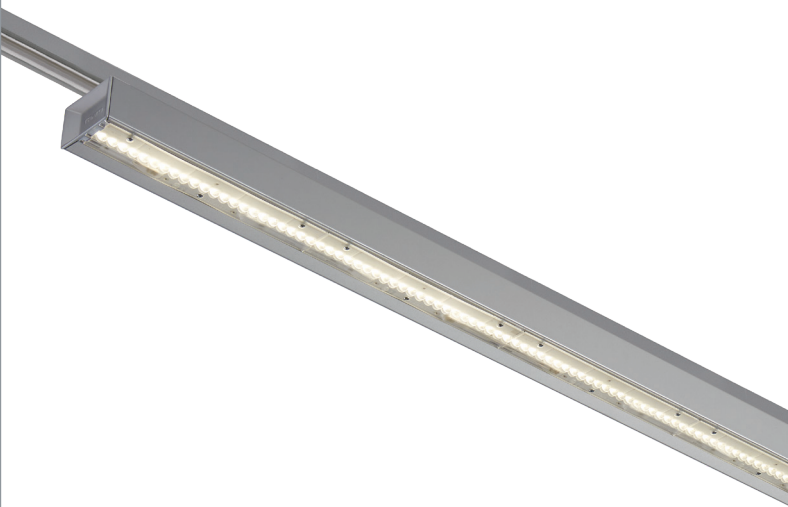


LS 3976 LED

LED LIGHTING FIXTURES

- Track suspended luminaire for LINEAR LED module, maximum 12 600 lumens
- CRI of 80
- MacAdam Ellipse: 3 SDCM
- Available in 3 000 K and 4 000 K
- 50 000 hours lamp life (L90B10)
- Luminous efficiency of system up to 183,3 lm/W
- 3 circuits track adaptor
- Housing made of prelacquered steel
- Cluster optical with lens, made of polycarbonate (PC)
- Endcaps made of injected polycarbonate
- Static heat sink
- Optical compartment protected against shocks and dust
- Weight:** approx. 3 kg (1225 mm), 4,5 kg (1775 mm)
- Standard length:** 1 225 or 1 775 mm
- Driver(s):** Fixed, Dimmable driver DALI (CDIMMDALI)
- Option(s):** Asymmetrical (ASY), Asymmetrical Double (DASY)
- Photobiological risk group 0**



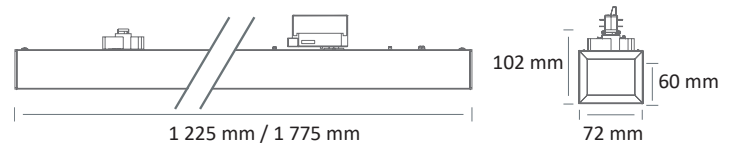
Driver(s)



Standards

Class I | IP 20 | 650° | IK 10 | RGO

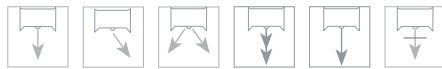
Dimensions



Colour(s)



Light distribution



SYM ASY DASY ELL INT MOY

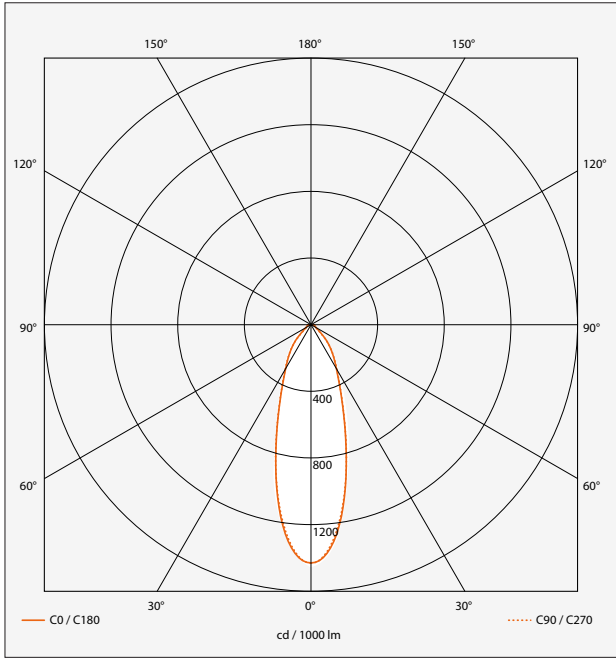
ITEM	NB OF MODULE(S)	CONSUMPTION	LUMINOUS FLUX	SYSTEM EFFICIENCY	COLOUR TEMPERATURE	CRI	EFFICIENCY ENERGY CLASS
LS 3976 LED 4600-830	2	30W	4800 lumens	160 lm/W	3000 K	80	C
LS 3976 LED 4600-840	2	30W	5040 lumens	168 lm/W	4000 K	80	C
LS 3976 LED 6600-830	3	38,4W	6390 lumens	166,4 lm/W	3000 K	80	C
LS 3976 LED 6600-840	3	38,4W	6720 lumens	175 lm/W	4000 K	80	C
LS 3976 LED 7000-830	2	41,3W	6860 lumens	166,1 lm/W	3000 K	80	C
LS 3976 LED 7000-840	2	41,3W	7200 lumens	174,3 lm/W	4000 K	80	C
LS 3976 LED 8000-830	2	48,6W	8000 lumens	164,6 lm/W	3000 K	80	C
LS 3976 LED 8000-840	2	48,6W	8400 lumens	172,8 lm/W	4000 K	80	C
LS 3976 LED 8500-830	3	53,9W	8820 lumens	163,6 lm/W	3000 K	80	C
LS 3976 LED 8500-840	3	53,9W	9270 lumens	172 lm/W	4000 K	80	C
LS 3976 LED 10500-830	3	59,8W	10290 lumens	172 lm/W	3000 K	80	C
LS 3976 LED 10500-840	3	59,8W	10800 lumens	180,6 lm/W	4000 K	80	C
LS 3976 LED 12000-830	3	71,4W	12000 lumens	168 lm/W	3000 K	80	C
LS 3976 LED 12000-840	3	71,4W	12600 lumens	176,5 lm/W	4000 K	80	C
LS 3976 LED 4600 HE-830	2	26,7W	4480 lumens	167,5 lm/W	3000 K	80	C
LS 3976 LED 4600 HE-840	2	26,7W	4700 lumens	175,7 lm/W	4000 K	80	C
LS 3976 LED 6600 HE-830	3	38,4W	6720 lumens	174,8 lm/W	3000 K	80	C
LS 3976 LED 6600 HE-840	3	38,4W	7050 lumens	183,3 lm/W	4000 K	80	C
LS 3976 LED 7000 HO-830	2	44,6W	6960 lumens	156 lm/W	3000 K	80	C
LS 3976 LED 7000 HO-840	2	44,6W	7300 lumens	163,7 lm/W	4000 K	80	C
LS 3976 LED 10500 HO-830	3	65,5W	10440 lumens	159,4 lm/W	3000 K	80	C
LS 3976 LED 10500 HO-840	3	65,5W	10950 lumens	167,2 lm/W	4000 K	80	C

LIGHT DISTRIBUTION

Intensive :
LOR 90 %



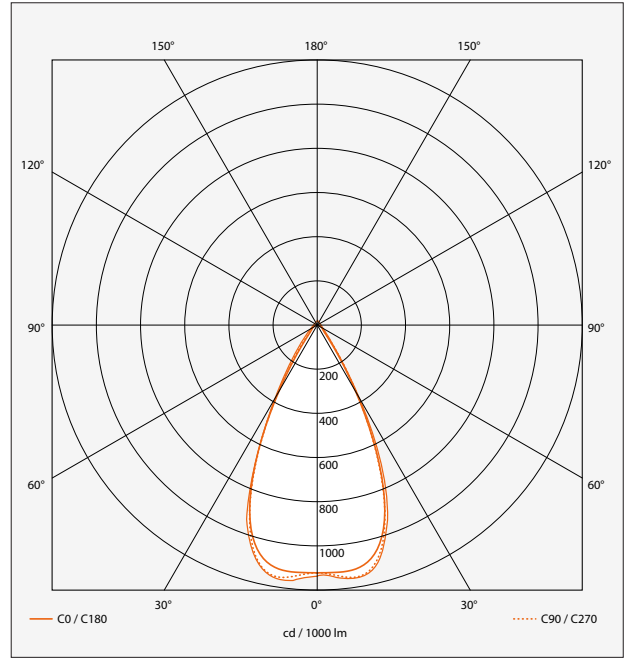
INT



Average
LOR 96 %



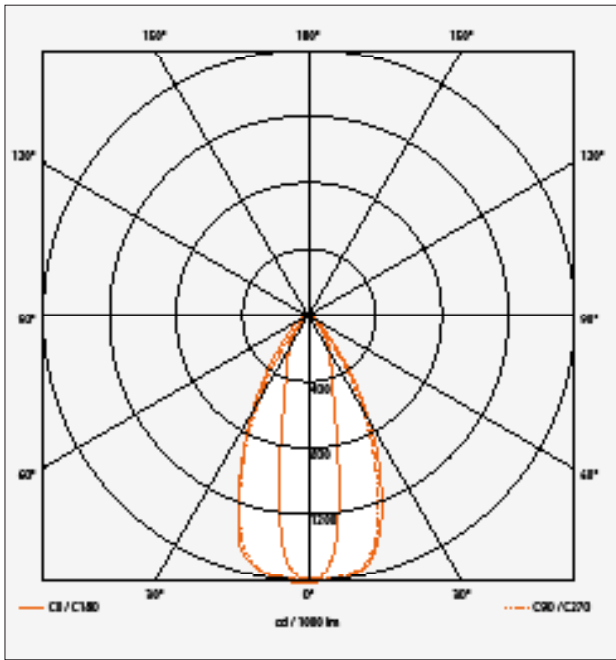
MOY



Elliptical
LOR 96,5 %



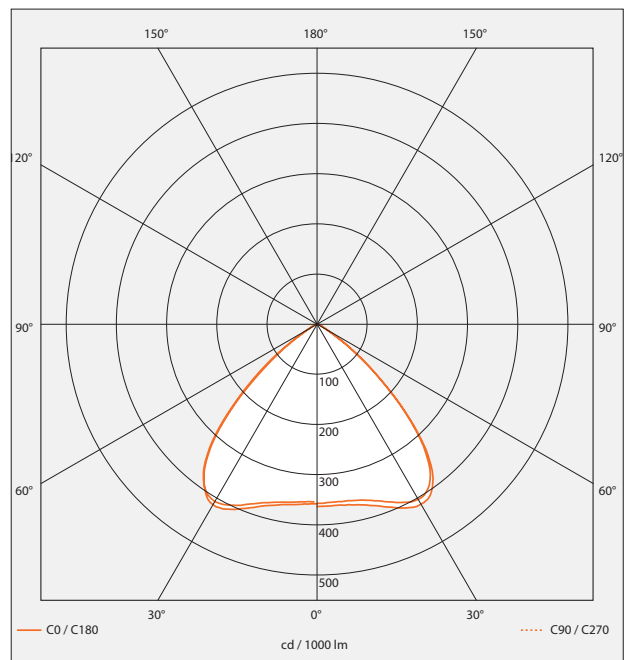
ELL



Symmetrical
LOR 97 %

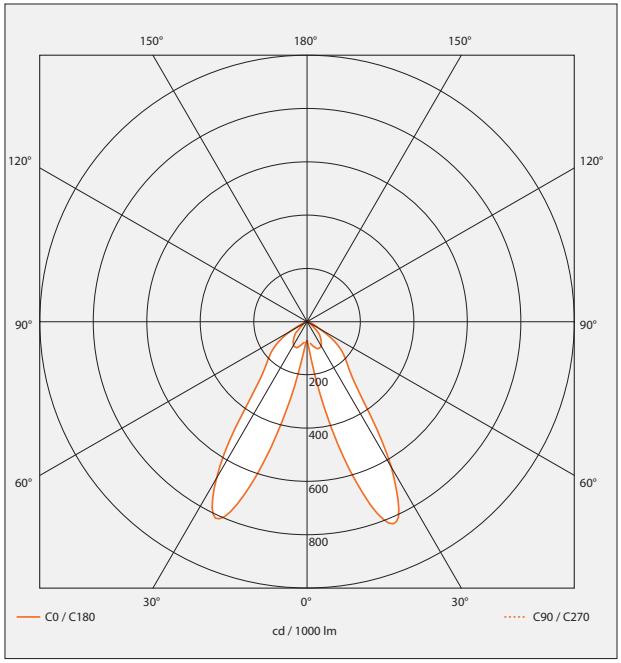


SYM



■ LIGHT DISTRIBUTION

Double asymmetrical:
LOR 97 %



Asymmetrical:
LOR 94 %

