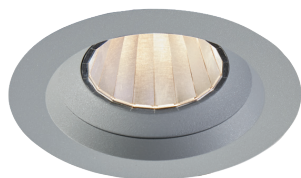


DL 5056-A LED D120



Colour(s)



Ø114 mm



DOWNLIGHTS ■ LED

- Recessed downlight for LED SPOT module, maximum 3 949 lumens
- CRI of 80 or 90
- MacAdam Ellipse : 3 SDCM
- Available in 2 500K, 3 000 K, 3 500 K and 4 000 K
- 50 000 hours lamp life (L80B10)
- Luminous efficiency of system up to 145,5 lm/W
- Adjustable brackets for easier installation
- Ring made of of painted steel
- Static heat sink
- **Weight:** approx. 1 kg
- **Driver(s):** Fixed, Dimmable driver DALI (CDIMMDALI)
- **Option(s) :** Fast connector (CORD)
- **Photobiological risk group 0**

Driver(s)



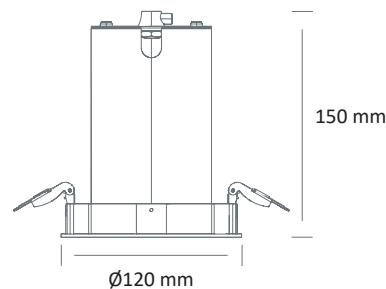
Standards

Class I | IP 20 | 650° | RGO

Beam(s)



Dimensions



ITEM	SECTION	POWER	CONSUMPTION	LUMINOUS FLUX	SYSTEM EFFICIENCY	COLOUR TEMPERATURE	CRI	EFFICIENCY ENERGY CLASS
DL 5056-A LED D120 2000-925	Bakery	23,8W	29W	2086 lumens	72 lm/W	2500 K	90	-
DL 5056-A LED D120 2000-930	Butchery	23,8W	29W	2158 lumens	74,5 lm/W	3000 K	90	-
DL 5056-A LED D120 3300-930	-	23,8W	27,1W	3281 lumens	121 lm/W	3000 K	90	E
DL 5056-A LED D120 3300-935	-	23,8W	27,1W	3294 lumens	121,5 lm/W	3500 K	90	E
DL 5056-A LED D120 3400-940	-	23,8W	27,1W	3384 lumens	125 lm/W	4000 K	90	E
DL 5056-A LED D120 3700-830	-	23,8W	27,1W	3684 lumens	136 lm/W	3000 K	80	D
DL 5056-A LED D120 3900-840	-	23,8W	27,1W	3949 lumens	145,5 lm/W	4000 K	80	D