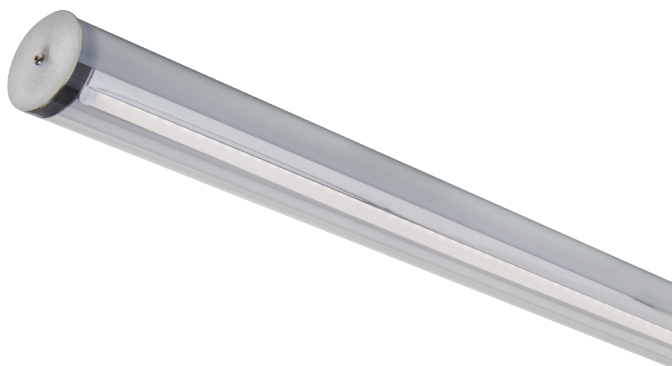


ET 2196 LED



EXTRA PROTECTED LUMINAIRES ■ LED

- Waterproof IP 68 ceiling mounted luminaire for LINEAR LED MODULE, maximum 5 400 lumens
- CRI of 80
- MacAdam Ellipse: 3 SDCM
- Available in 4 000 K
- 50 000 hours lamp life (L80B10)
- Luminous efficiency of system up to 100 lm/W
- Interior and exterior lighting
- Housing made of opal co-extruded polycarbonate In the upper part to hide the technical elements, and clear in the lower part
- Endcap made of stainless steel
- Static heat sink
- **Weight:** approx. 3,6 kg
- **Driver(s) :** Fixed, Convertisseur à gradation DALI (CDIMMDALI)
- **Option(s) :** Stainless steel suspension brackets

Driver(s)



Standards

Class I | IP 68 | 850° | IK 10

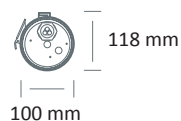
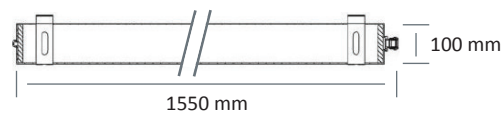
Efficiency energy class



Beam(s)



Dimensions



Colour(s)



ITEM	CONSUMPTION	LUMINOUS FLUX	SYSTEM EFFICIENCY	COLOUR TEMPERATURE	CRI	LENGTH
ET 2196 LED 5400-840	54W	5400 lumens	100 lm/W	4000 K	80	1550 mm

Stainless steel suspension brackets

