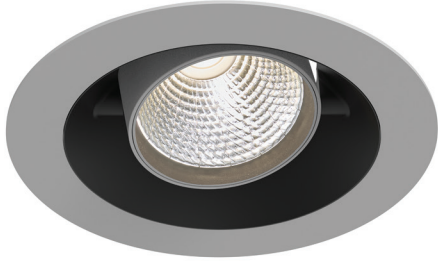


EO 5140-A LED



Ring colour(s)



Ø135 mm



ORIENTABLE AND ADJUSTABLE ■ LED

- Recessed orientable for LED SPOT module, maximum 4 046 lumens
- CRI of 90
- MacAdam Ellipse : 2 SDCM
- Available in 2 700 K, 3 000 K, 3 500 K, 4 000 K and 5 000 K
- 50 000 hours lamp life (L80B10)
- Luminous efficiency of system up to 163 lm/W
- Springs in pressure for easier installation
- Ring made of die-cast aluminium
- Aluminium reflective optics
- **Weight** : Approx. 1 kg
- **Drivers(s)** : Fixed, Dimmable DALI, Casambi, Connect
- **Option(s)** : Fast connector (CORD)
- Photobiological risk group 1

Driver(s)



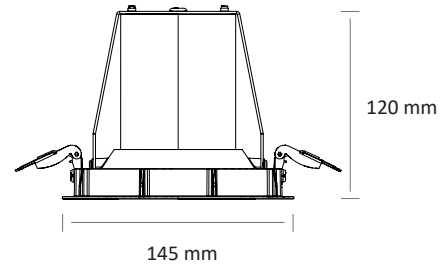
Standards

Class II | IP 20 | 650° | RG1

Beam(s)



Dimensions



EO 5140-A LED

Performance of specialized lighting modules

ITEM	SECTION	POWER	CONSUMPTION	LUMINOUS FLUX	SYSTEM EFFICIENCY	COLOUR TEMPERATURE	CRI	EFFICIENCY ENERGY CLASS
EO 5140-A LED 3500-927	Bakery	24 W	27,9 W	3480 lumens	124,7 lm/W	2700 K	90	-
EO 5140-A LED 2300-930	Butchery	23,7 W	26,3 W	2297 lumens	87,2 lm/W	3000 K	90	-
EO 5140-A LED 3000-950	Fishmonger's	16,8 W	18,5 W	3015 lumens	163 lm/W	5000 K	90	E
EO 5140-A LED 4000-950	Fishmonger's	24,1 W	26,5 W	4046 lumens	152,7 lm/W	5000 K	90	E

High efficiency performance of the components (HE) CRI 90 with R9>80

ITEM	POWER	CONSUMPTION	LUMINOUS FLUX	SYSTEM EFFICIENCY	COLOUR TEMPERATURE	CRI	EFFICIENCY ENERGY CLASS
EO 5140-A LED HE 3000-930	16,7 W	19,4 W	2956 lumens	152,2 lm/W	3000 K	90	E
EO 5140-A LED HE 3000-935	16,7 W	19,4 W	2937 lumens	151,2 lm/W	3500 K	90	E
EO 5140-A LED HE 3000-940	16,7 W	19,4 W	2961 lumens	152,5 lm/W	4000 K	90	E
EO 5140-A LED HE 4000-930	24 W	27,9 W	3924 lumens	140,6 lm/W	3000 K	90	E
EO 5140-A LED HE 4000-935	24 W	27,9 W	3899 lumens	139,7 lm/W	3000 K	90	E
EO 5140-A LED HE 4000-940	24 W	27,9 W	3930 lumens	140,8 lm/W	4000 K	90	E

Option(s)



White ring
White interior



Black ring
White interior



Grey ring
White interior



White ring
Black interior



Black ring
Black interior



Grey ring
Black interior

UPDATE (MM/DD/YY) : 02/13/2026