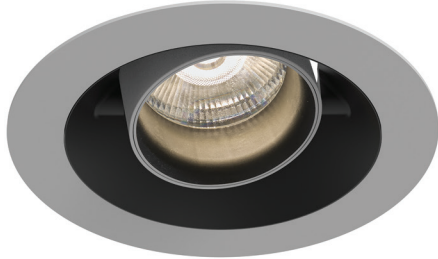


EO 5140-B LED ICOB



Ring colour(s)



Ø135 mm



ORIENTABLE AND ADJUSTABLE . LED

- Recessed orientable for LED SPOT module, maximum 2 784 lumens
- CRI of 90
- MacAdam Ellipse : 2 SDCM
- Available in 3 000 K, 3 500 K et 4 000 K
- 50 000 hours lamp life (L80B10)
- Luminous efficiency of system up to 144,3 lm/W
- Springs in pressure for easier installation
- Ring made of die-cast aluminium
- Interchangeable ICOB module
- Polycarbonate lens optics
- **Weight** : Approx. 0,9 kg
- **Drivers(s)** : Fixed, Dimmable DALI (CDIMMDALI), Casambi, Connect
- **Option(s)** : Fast connector (CORD)
- Photobiological risk group 1

Driver(s)



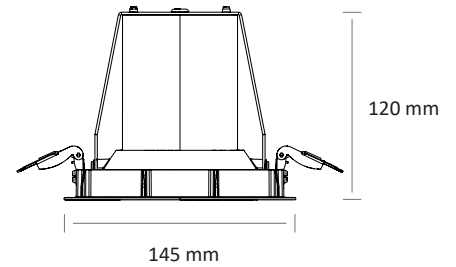
Standards

Class II | IP 20 | 650° | RG1

Beam(s)

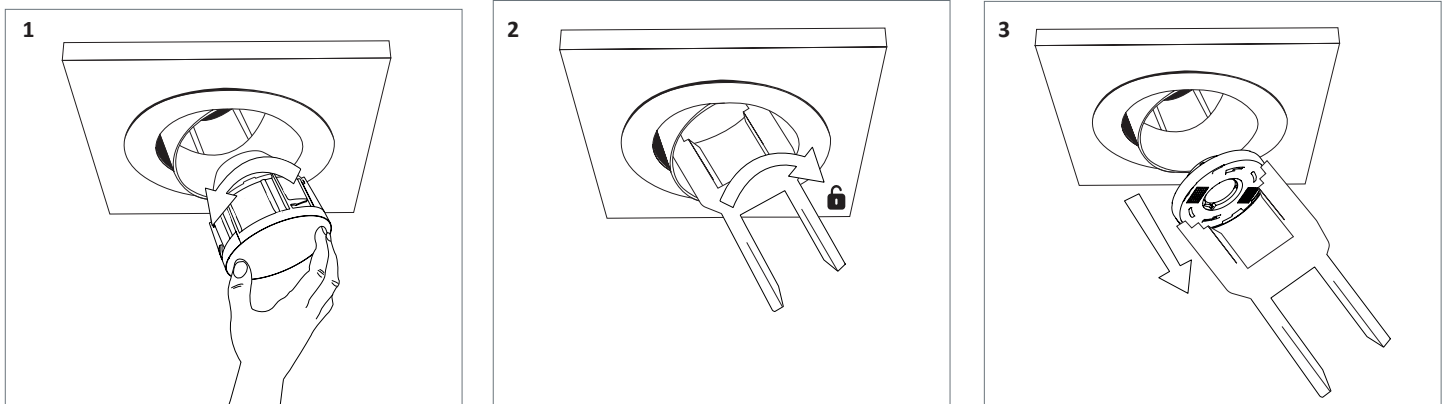


Dimensions



A product equipped with ICOB technology is provided with a mechanism enable to change the module on the GH36d-4 socket by a simple quarter-turn rotation.

ICOB version

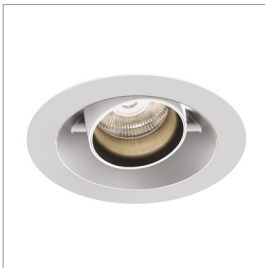


EO 5140-B LED ICOB

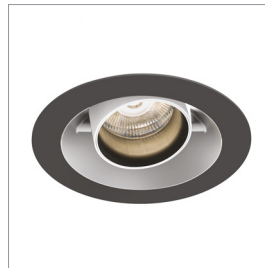
High efficiency performance of the components (HE) CRI 90 with R9>80

ITEM	POWER	CONSUMPTION	LUMINOUS FLUX	SYSTEM EFFICIENCY	COLOUR TEMPERATURE	CRI	EFFICIENCY ENERGY CLASS
EO 5140-B LED ICOB HE 2800-930	16,6 W	19,3 W	2771 lumens	143,6 lm/W	3000 K	90	E
EO 5140-B LED ICOB HE 2800-935	16,6 W	19,3 W	2752 lumens	142,6 lm/W	3500 K	90	E
EO 5140-B LED ICOB HE 3000-940	16,6 W	19,3 W	2784 lumens	144,3 lm/W	4000 K	90	E

Option(s)



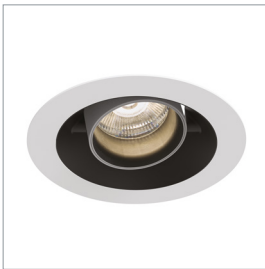
White ring
White interior



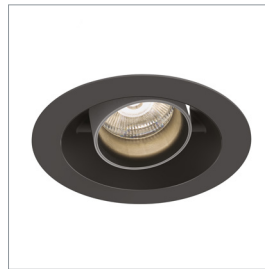
Black ring
White interior



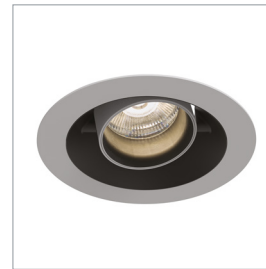
Grey ring
White interior



White ring
Black interior



Black ring
Black interior



Grey ring
Black interior