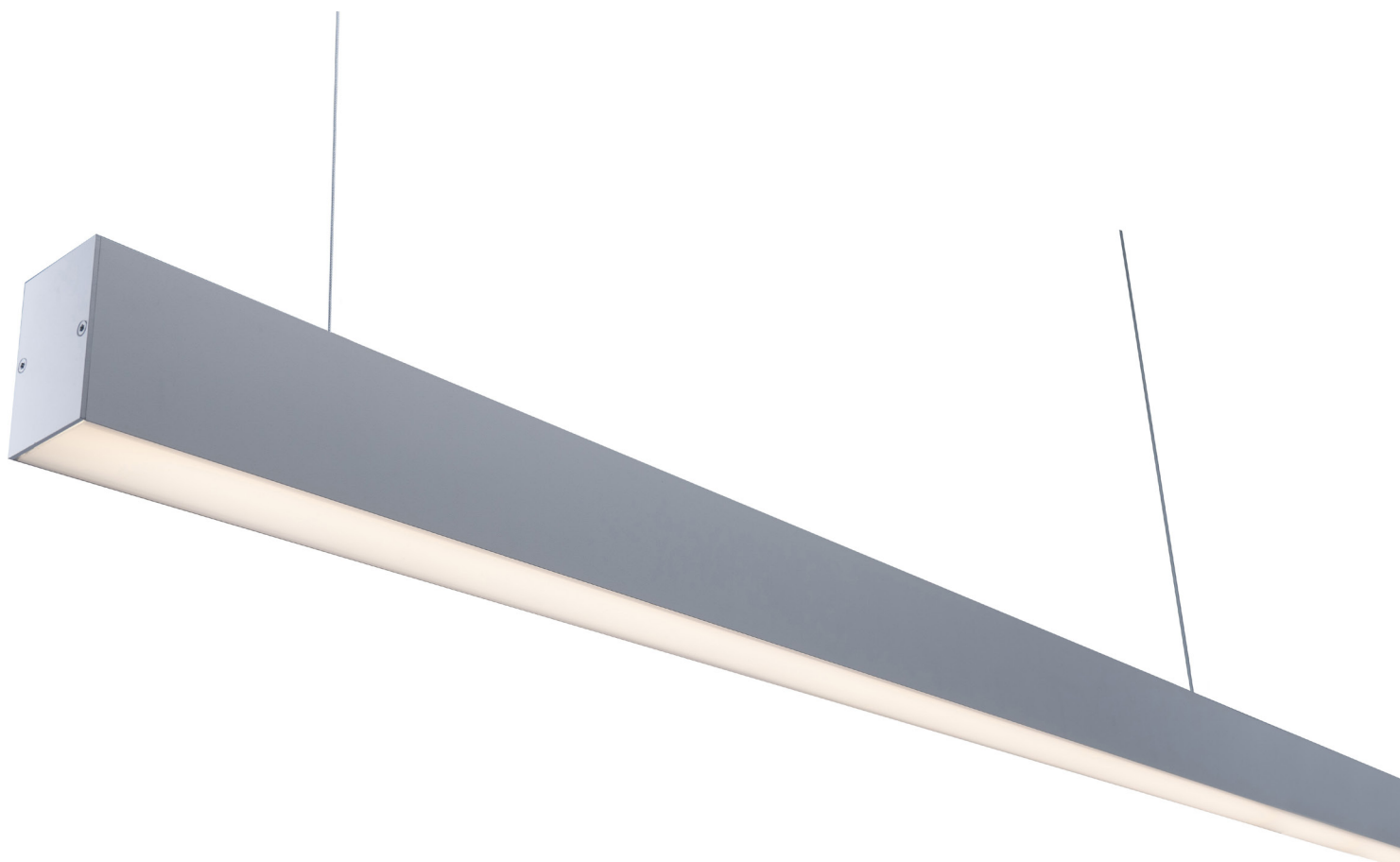


TRATO SE 5080 LED

Architectural line



TRATO SE 5080 LED

Lighting system for linear LED Module, maximum 13 432 lumens / meters

- Installation: suspended, LO or LI recessed, ceiling mounted
- Independant elements or elements for beginning, intermediare or end for continuous lighting up to 40 meters
- CRI of 80
- MacAdam ellipse : 3 SDCM
- Available in 3 000 K and 4 000 K
- 50 000 hours lamp life (L80B20)
- Luminous efficiency of system up to 162,8 lm/W
- Optics available in rolls up to 50 meters (10, 20, 30, 40 or 50 meters) in predefined lenght (1 120 mm, 1 680 mm, 2 240 mm and 3 360 mm)
- Opal diffuser made of polycarbonate (DO) or microprism diffuser (MIC)
- Housing made of painted extruded aluminium profil
- Painted steel endcaps
- Static heat sink
- **Weight:** approx. 5 kg / m
- **Number of module(s):** Depend on the lenght of the luminaire
- **Driver(s):** Fixed, Dimmable driver DALI (CDIMMDALI)
- **Accessories:** Suspension kit
- **Option(s):** Suspended luminaire with indirect lighting, 90° angle, lighting sensor and-or movement detection

Driver(s)



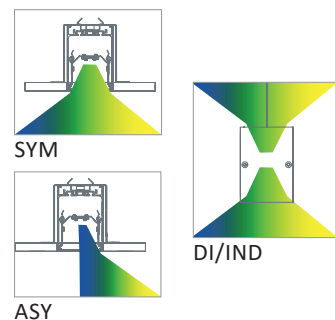
Standards

Class I | IK07 | 650°

Efficiency energy class



Beam(s)



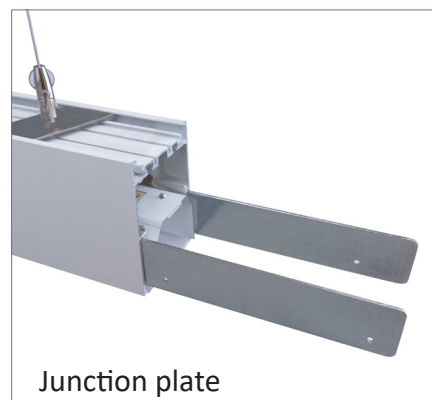
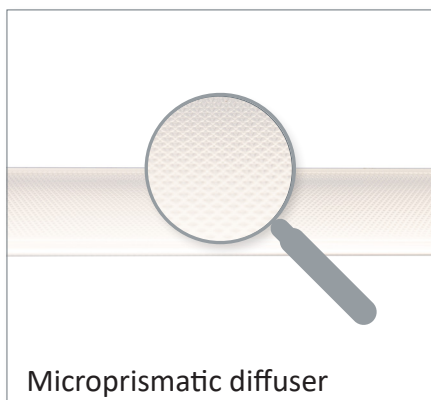
LED configuration recommended for commercial use

ITEM	LENGTH (MM)	POWER	CONSUMPTION	LUMINOUS FLUX	SYSTEM EFFICIENCY	COLOUR TEMPERATURE	CRI
SE 5080 LED 4400-830	1120	25W	29W	4345 lumens	149,5 lm/W	3000	80
SE 5080 LED 4400-840	1120	25W	29W	4574 lumens	157,3 lm/W	4000	80
SE 5080 LED 6600-830	1680	36,6W	42W	6380 lumens	151,6 lm/W	3000	80
SE 5080 LED 6600-840	1680	36,6W	42W	6716 lumens	159,6 lm/W	4000	80
SE 5080 LED 8800-830	2240	50W	58W	8690 lumens	149,5 lm/W	3000	80
SE 5080 LED 8800-840	2240	50W	58W	9148 lumens	157,3 lm/W	4000	80
SE 5080 LED 13000-830	3360	73,2W	84W	12760 lumens	151,6lm/W	3000	80
SE 5080 LED 13000-840	3360	73,2W	84W	13432 lumens	159,6 lm/W	4000	80

LED configuration recommended for office use (UGR<19 with microprismatic optics)

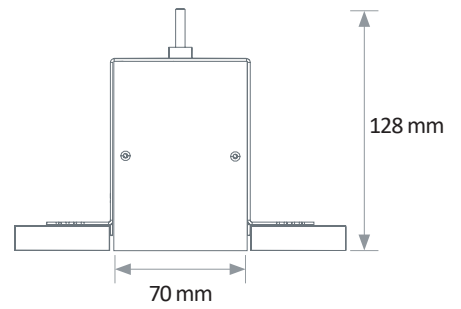
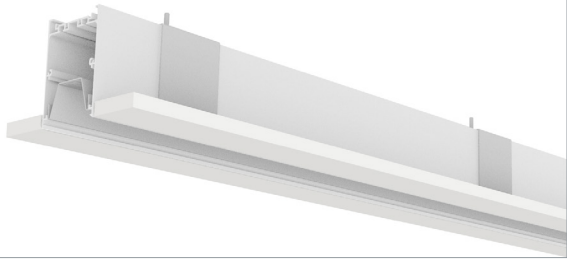
ITEM	LENGTH (MM)	POWER	CONSUMPTION	LUMINOUS FLUX	SYSTEM EFFICIENCY	COLOUR TEMPERATURE	CRI
SE 5080 LED 2250-830	1120	12,1W	15,5W	2232 lumens	143,8 lm/W	3000 K	80
SE 5080 LED 2250-840	1120	11,2W	14,4W	2197 lumens	153 lm/W	4000 K	80
SE 5080 LED 3400-830	1680	17,7W	21,3W	3276 lumens	153,6 lm/W	3000 K	80
SE 5080 LED 3400-840	1680	16,8W	20,2W	3295 lumens	162,8 lm/W	4000 K	80
SE 5080 LED 4500-830	2240	24,2W	31W	4464 lumens	143,8 lm/W	3000 K	80
SE 5080 LED 4500-840	2240	22,4W	28,8W	4394 lumens	153 lm/W	4000 K	80
SE 5080 LED 6800-830	3360	35,4W	42,6W	6552 lumens	153,6 lm/W	3000 K	80
SE 5080 LED 6800-840	3360	33,6W	40,4W	6590 lumens	162,8 lm/W	4000 K	80

TRATO SE 5080 LED

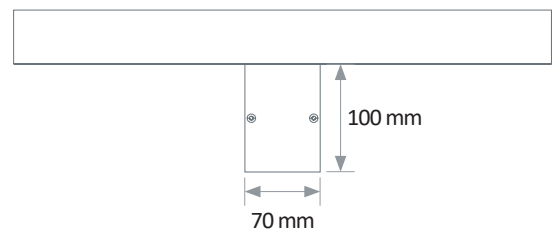
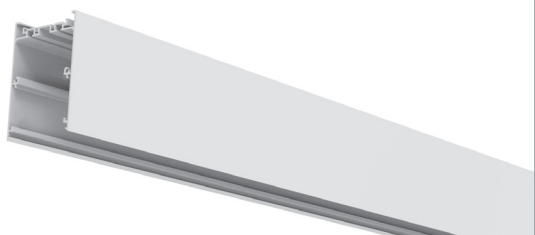


The rolls are delivered in lengths of 10, 20, 30, 40 or 50 meters, which enables to install the diffuser on the whole length, without interruption.

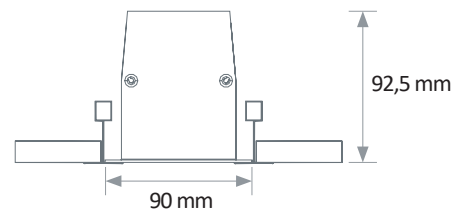
1- Trimless recessed



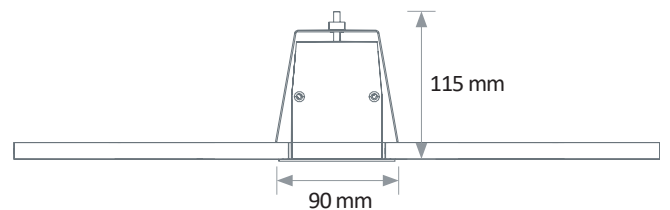
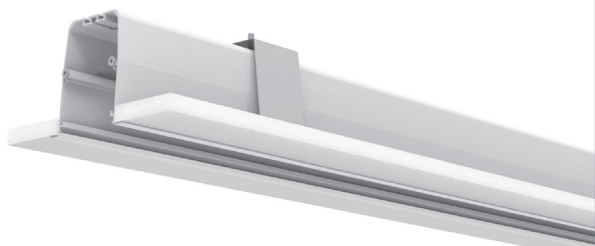
2- Ceiling mounted



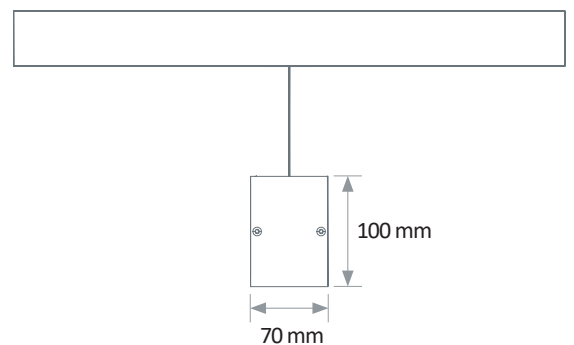
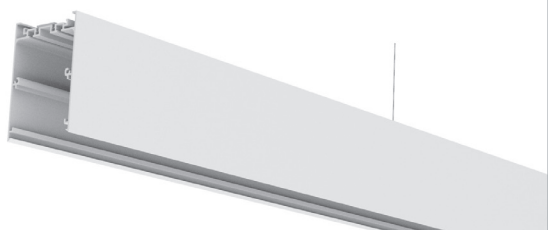
3- Recessed Lay-in



4- Recessed Lay-out



5- Suspended



TRATO SE 5080 LED



TRATO
Lighting

22, rue Molière - BP369 - 59057 ROUBAIX Cedex 01 (Lille) FRANCE
Tél. : +33 (0) 320 81 50 00 - Fax : +33 (0) 320 81 50 19
Email : contact@trato.fr - Web : www.trato.fr