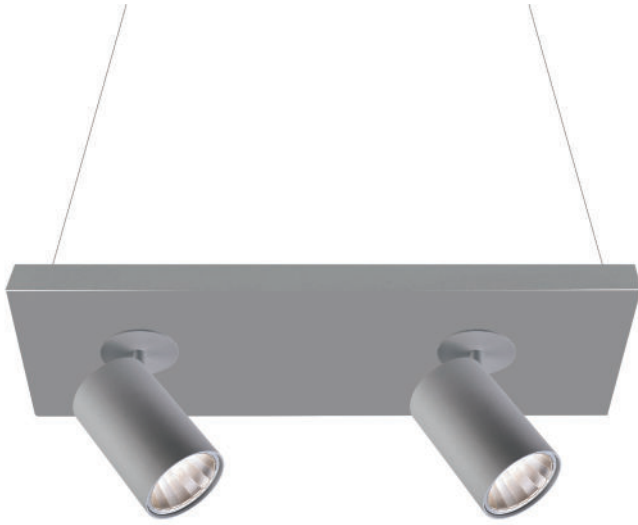


## LS 2047-2 LED



### Colour(s)



185x355 mm



## SUSPENDED LUMINAIRES ■ LED

- Suspended spotlights for LED SPOT module, maximum 2 x 3 949 lumens
- IRC of 80 or 90
- MacAdam Ellipse: 3 SDCM
- Available in 3 000 K, 3500 K and 4 000 K
- 50 000 hours lamp life (L80B50)
- Luminous efficiency of system up to 145,5 lm/W
- Housing made of painted steel
- Static heat sink
- Optical protection clear glass
- **Weight:** approx. 5 kg
- **Number of projectors:** 2
- **Driver(s):** Fixe (C Fixed), Dimmable driver DALI (CDIMMDALI)
- **Option(s):** Fast connector (CORD), Colour filters (FIL)

### Driver(s)



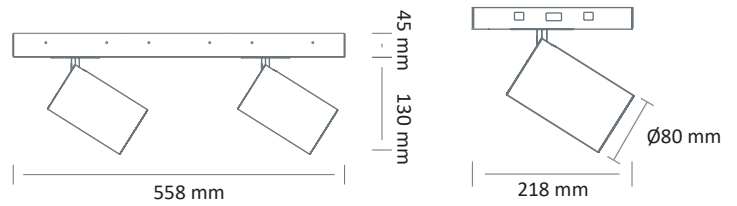
### Standards

Class I | IP 20 | 650°

### Beam(s)



### Dimensions



ITEM	POWER	CONSUMPTION	LUMINOUS FLUX	SYSTEM EFFICIENCY	COLOUR TEMPERATURE	CRI	EFFICIENCY ENERGY CLASS
LS 2047-2 LED 3300-930	2x23,8 W	2x27,1W	2x3281 lumens	121 lm/W	3000 K	90	E
LS 2047-2 LED 3300-935	2x23,8 W	2x27,1W	2x3294 lumens	121,5 lm/W	3500 K	90	E
LS 2047-2 LED 3400-940	2x23,8 W	2x27,1W	2x3384 lumens	125 lm/W	4000 K	90	E
LS 2047-2 LED 3700-830	2x23,8 W	2x27,1W	2x3684 lumens	136 lm/W	3000 K	80	D
LS 2047-2 LED 3900-840	2x23,8 W	2x27,1W	2x3949 lumens	145,5 lm/W	4000 K	80	D