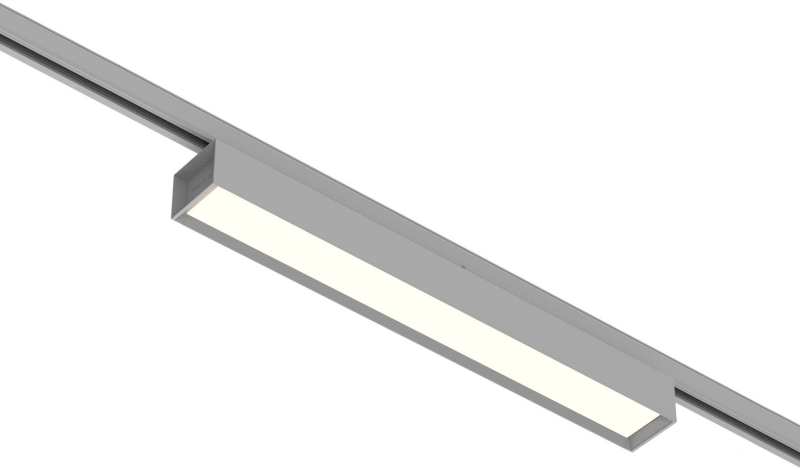


LS 5145 LED



Light distribution



LED LIGHTING FIXTURES

- Track suspended luminaire for LINEAR LED module, maximum 4574 lumens
- CRI of 80
- MacAdam Ellipse: 3 SDCM
- Available in 3 000 K and 4 000 K
- 50 000 hours lamp life (L90B10)
- Luminous efficiency of system up to 157 lm/W
- 3 circuits track adaptor
- Housing made of prelacquered steel
- Endcaps made of injected polycarbonate
- Static heat sink
- **Weight:** approx. 2 kg (613 mm), 3 kg (1173 mm)
- **Standard length:** 613 or 1173 mm
- **Driver(s):** Fixed, Dimmable driver DALI (CDIMMDALI)
- **Photobiological risk group 0**

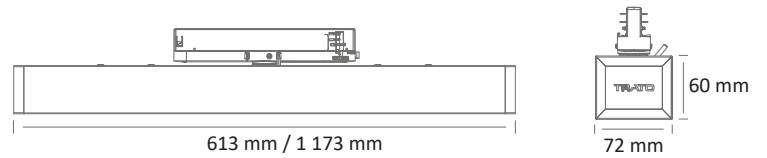
Driver(s)



Standards

Class I | IP 20 | 650° | RGO

Dimensions



ITEM	NB DE MODULE(S)	CONSUMPTION	LUMINOUS FLUX	SYSTEM EFFICIENCY	COLOUR TEMPERATURE	CRI	EFFICIENCY ENERGY CLASS
LS 5145 LED 2200-830	1	15 W	2173 lumens	144 lm/W	3000 K	80	D
LS 5145 LED 2400-840	1	15 W	2287 lumens	151 lm/W	4000 K	80	D
LS 5145 LED 4400-830	2	29 W	4345 lumens	150 lm/W	3000 K	80	D
LS 5145 LED 4400-840	2	29 W	4574 lumens	157 lm/W	4000 K	80	D