

LS 2371 LED



Colour(s)



SUSPENDED LUMINAIRES ■ LED

- Suspended luminaire for LED module, maximum 65 780 lumens
- CRI of 80
- MacAdam Ellipse: 3 SDCM
- Available in 4 000 K
- 70 000 hours lamp life (L90B10)
- Luminous efficiency of system up to 95,6 lm/W
- Housing made of extruded aluminium
- Opal (DO) diffuser made of opal silicone
- Static heat sink
- **Weight:** approx. 3,4 kg (455 mm), 8,5 kg (1136 mm), 14,6 kg (1853 mm), 23,3 kg (2926 mm), 45,1 kg (5789 mm)
- **Driver(s):** Fixed, Dimmable driver DALI (CDIMMDALI)
- **Option(s):** Fast connector (CORD), Acoustic panel and foam (Ø455, Ø777 et Ø1136)

Driver(s)



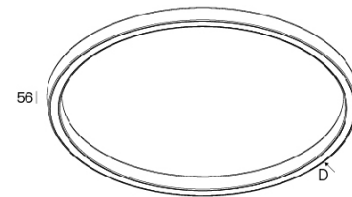
Standards

Class I | IP 40 | 950°

Beam(s)



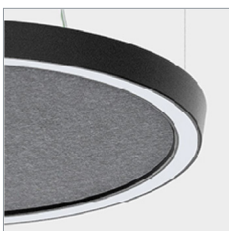
Dimensions



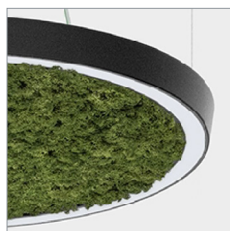
55
56
35
Plan transversal

ITEM	DIAMETER	CONSUMPTION	LUMINOUS FLUX	SYSTEM EFFICIENCY	COLOUR TEMPERATURE	CRI	EFFICIENCY ENERGY CLASS
LS 2371 LED 2000-840	Ø455	33W	2761 lumens	83,7 lm/W	4000 K	80	C
LS 2371 LED 5000-840	Ø777	64W	5796 lumens	90,6 lm/W	4000 K	80	C
LS 2371 LED 8000-840	Ø1136	94W	8280 lumens	88,1 lm/W	4000 K	80	C
LS 2371 LED 11000-840	Ø1494	128W	11 592 lumens	90,6 lm/W	4000 K	80	C
LS 2371 LED 14000-840	Ø1853	158W	14 950 lumens	94,6 lm/W	4000 K	80	C
LS 2371 LED 20000-840	Ø2569	224W	20 930 lumens	93,4 lm/W	4000 K	80	C
LS 2371 LED 23000-840	Ø2926	256W	23 920 lumens	93,4 lm/W	4000 K	80	C
LS 2371 LED 32000-840	Ø4000	344W	32 890 lumens	95,6 lm/W	4000 K	80	C
LS 2371 LED 47000-840	Ø5789	512W	47 840 lumens	93,4 lm/W	4000 K	80	C
LS 2371 LED 65000-840	Ø7936	736W	65 780 lumens	89,4 lm/W	4000 K	80	C

Options



Acoustic panel



Acoustic foam