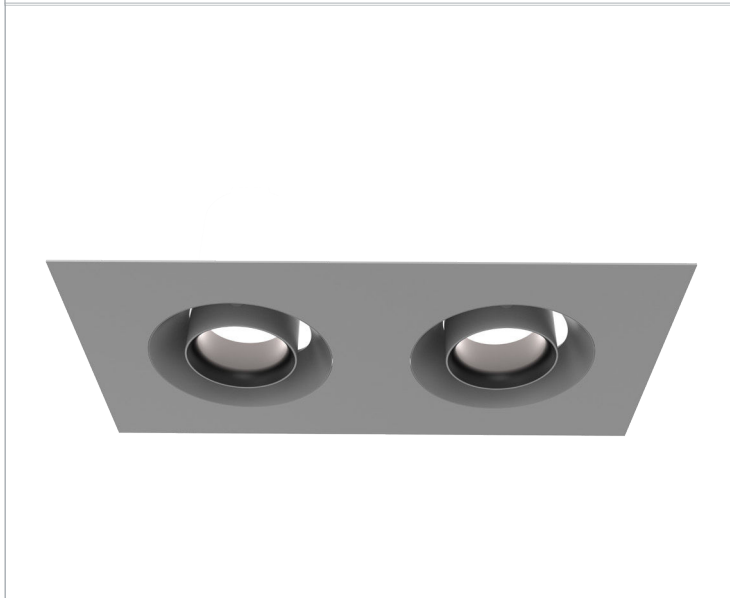
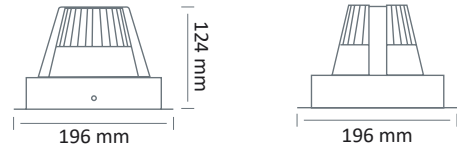
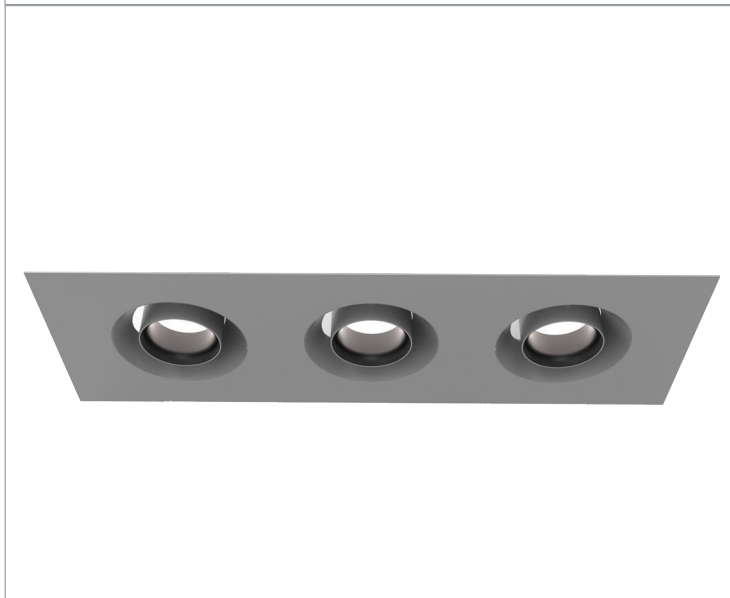
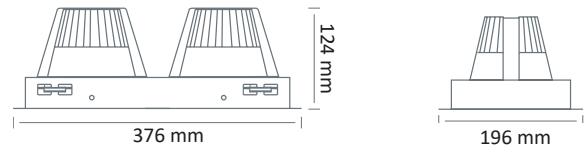


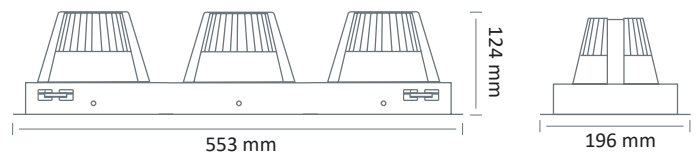
EO 5140-1B LED



EO 5140-2B LED



EO 5140-3B LED



Colour(s)



ORIENTABLE AND ADJUSTABLE ■ LED

- Ceiling mounted luminaire for LED SPOT module, up to 3x4 610 lumens
- MacAdam Ellipse: 3 SDCM
- CRI of 80 or 90
- Available in 2 500 K, 3 000 K, 3 500 K and 4 000 K
- 50 000 hours lamp life (L80B10)
- Luminous efficiency of system up to 152,2 lm/W
- Springs in pressure for easier installation
- Ring made of painted steel
- Static heat sink
- **Weight:** approx. 1,3 kg
- **Driver(s):** Fixed, Dimmable DALI (CDIMMDALI), Connect
- **Option(s):** Fast connector (CORD)

Driver(s)



Standards

Classe I | IP 20 | 650°

Beam(s)



High efficiency performance performance of the components (HE) IRC90

ITEM	POWER	CONSUMPTION	LUMINOUS FLUX	SYSTEM EFFICIENCY	COLOURS TEMPERATURE	CRI	EFFICIENCY ENERGY CLASS
EO 5140-1B LED HE 3000-930	16,8 W	19,8 W	3010 lumens	152 lm/W	3000 K	90	E
EO 5140-1B LED HE 3000-935	16,8 W	19,8 W	2991 lumens	151 lm/W	3500 K	90	E
EO 5140-1B LED HE 3000-940	16,8 W	19,8 W	3015 lumens	152,2 lm/W	4000 K	90	E
EO 5140-1B LED HE 4000-930	24,1 W	27,7 W	4016 lumens	144,9 lm/W	3000 K	90	E
EO 5140-1B LED HE 4000-935	24,1 W	27,7 W	3991 lumens	144 lm/W	3500 K	90	E
EO 5140-1B LED HE 4000-940	24,1 W	27,7 W	4023 lumens	145,2 lm/W	4000 K	90	E
EO 5140-2B LED HE 3000-930	2x16,8 W	2x19,8 W	2x3010 lumens	152 lm/W	3000 K	90	E
EO 5140-2B LED HE 3000-935	2x16,8 W	2x19,8 W	2x2991 lumens	151 lm/W	3500 K	90	E
EO 5140-2B LED HE 3000-940	2x16,8 W	2x19,8 W	2x3015 lumens	152,2 lm/W	4000 K	90	E
EO 5140-2B LED HE 4000-930	2x24,1 W	2x27,7 W	2x4016 lumens	144,9 lm/W	3000 K	90	E
EO 5140-2B LED HE 4000-935	2x24,1 W	2x27,7 W	2x3991 lumens	144 lm/W	3500 K	90	E
EO 5140-2B LED HE 4000-940	2x24,1 W	2x27,7 W	2x4023 lumens	145,2 lm/W	4000 K	90	E
EO 5140-3B LED HE 3000-930	3x16,8 W	3x19,8 W	3x3010 lumens	152 lm/W	3000 K	90	E
EO 5140-3B LED HE 3000-935	3x16,8 W	3x19,8 W	3x2991 lumens	151 lm/W	3500 K	90	E
EO 5140-3B LED HE 3000-940	3x16,8 W	3x19,8 W	3x3015 lumens	152,2 lm/W	4000 K	90	E
EO 5140-3B LED HE 4000-930	3x24,1 W	3x27,7 W	3x4016 lumens	144,9 lm/W	3000 K	90	E
EO 5140-3B LED HE 4000-935	3x24,1 W	3x27,7 W	3x3991 lumens	144 lm/W	3500 K	90	E
EO 5140-3B LED HE 4000-940	3x24,1 W	3x27,7 W	3x4023 lumens	145,2 lm/W	4000 K	90	E

EO 5140-1B2B3B LED

ITEM	RAYON	POWER	CONSOMMATION	LUMINOUS FLUX	SYSTEM EFFICIENCY	COLOURS TEMPERATURE	CRI	EFFICIENCY ENERGY CLASS
EO5140-1B LED 2000-925	Bakery	23,7 W	27,9 W	2171 lumens	77,9 lm/W	2500 K	90	-
EO5140-1B LED 2000-930	Butchery	23,7 W	27,9 W	2297 lumens	82,4 lm/W	3000 K	90	-
EO5140-1B LED 3300-930	-	23,9 W	28,7 W	3281 lumens	114 lm/W	3000 K	90	E
EO5140-1B LED 3400-940	-	23,9 W	28,7 W	3384 lumens	118 lm/W	4000 K	90	E
EO5140-1B LED 3600-830	-	21,7 W	25,2 W	3609 lumens	143,2 lm/W	3000 K	80	D
EO5140-1B LED 3800-840	-	21,7 W	25,2 W	3820 lumens	151,5 lm/W	4000 K	80	D
EO5140-1B LED 3900-930	-	29,4 W	34,6 W	3899 lumens	112,6 lm/W	3000 K	90	E
EO5140-1B LED 4000-940	-	29,4 W	34,6 W	4022 lumens	116 lm/W	4000 K	90	E
EO5140-1B LED 4400-830	-	27,1 W	31,2 W	4352 lumens	139,4 lm/W	3000 K	80	D
EO5140-1B LED 4700-840	-	27,1 W	31,2 W	4610 lumens	147,7 lm/W	4000 K	80	D
EO5140-2B LED 2000-925	Bakery	2X23,7 W	27,9 W	2X2171 lumens	77,9 lm/W	2500 K	90	-
EO5140-2B LED 2000-930	Butchery	2X23,7 W	27,9 W	2X2297 lumens	82,4 lm/W	3000 K	90	-
EO5140-2B LED 3300-930	-	2X23,9 W	28,7 W	2X3281 lumens	114 lm/W	3000 K	90	E
EO5140-2B LED 3400-940	-	2X23,9 W	28,7 W	2X3384 lumens	118 lm/W	4000 K	90	E
EO5140-2B LED 3600-830	-	2X21,7 W	25,2 W	2X3609 lumens	143,2 lm/W	3000 K	80	D
EO5140-2B LED 3800-840	-	2X21,7 W	25,2 W	2X3820 lumens	151,5 lm/W	4000 K	80	D
EO5140-2B LED 3900-930	-	2X29,4 W	34,6 W	2X3899 lumens	112,6 lm/W	3000 K	90	E
EO5140-2B LED 4000-940	-	2X29,4 W	34,6 W	2X4022 lumens	116 lm/W	4000 K	90	E
EO5140-2B LED 4400-830	-	2X27,1 W	31,2 W	2X4352 lumens	139,4 lm/W	3000 K	80	D
EO5140-2B LED 4700-840	-	2X27,1 W	31,2 W	2X4610 lumens	147,7 lm/W	4000 K	80	D
EO5140-3B LED 2000-925	Bakery	3X23,7 W	27,9 W	3X2171 lumens	77,9 lm/W	2500 K	90	-
EO5140-3B LED 2000-930	Butchery	3X23,7 W	27,9 W	3X2297 lumens	82,4 lm/W	3000 K	90	-
EO5140-3B LED 3300-930	-	3X23,9 W	28,7 W	3X3281 lumens	114 lm/W	3000 K	90	E
EO5140-3B LED 3400-940	-	3X23,9 W	28,7 W	3X3384 lumens	118 lm/W	4000 K	90	E
EO5140-3B LED 3600-830	-	3X21,7 W	25,2 W	3X3609 lumens	143,2 lm/W	3000 K	80	D
EO5140-3B LED 3800-840	-	3X21,7 W	25,2 W	3X3820 lumens	151,5 lm/W	4000 K	80	D
EO5140-3B LED 3900-930	-	3X29,4 W	34,6 W	3X3899 lumens	112,6 lm/W	3000 K	90	E
EO5140-3B LED 4000-940	-	3X29,4 W	34,6 W	3X4022 lumens	116 lm/W	4000 K	90	E
EO5140-3B LED 4400-830	-	3X27,1 W	31,2 W	3X4352 lumens	139,4 lm/W	3000 K	80	D
EO5140-3B LED 4700-840	-	3X27,1 W	31,2 W	3X4610 lumens	147,7 lm/W	4000 K	80	D

UPDATE (MM/DD/YY) : 20/12/2023