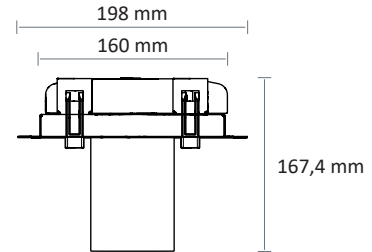
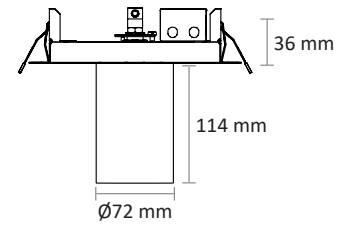
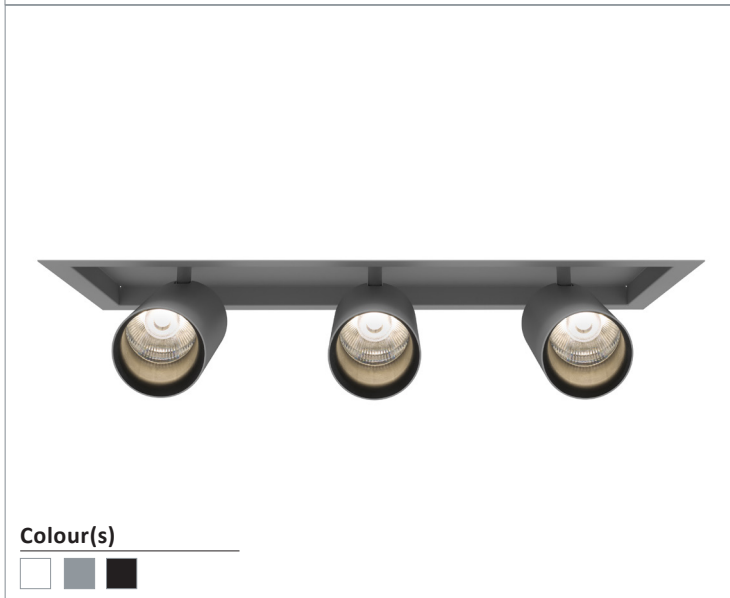
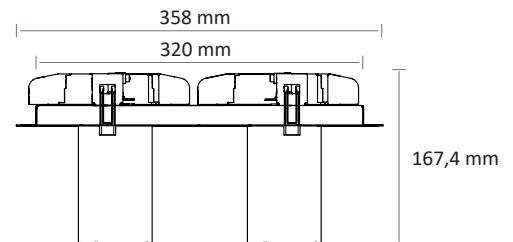
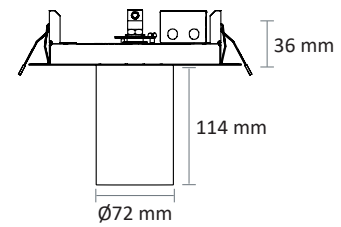




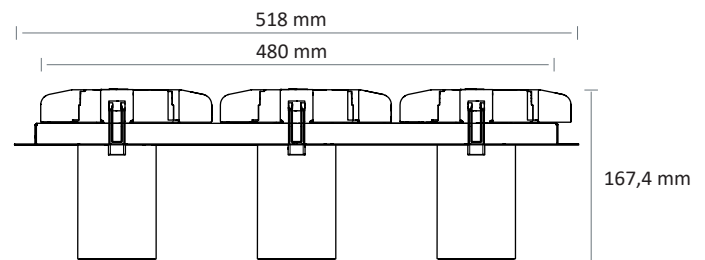
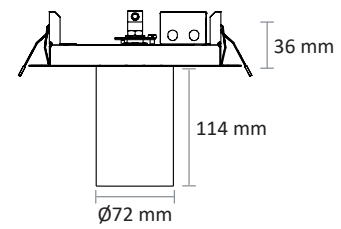
EO 5140-1B LED ROD



EO 5140-2B LED ROD



EO 5140-3B LED ROD



Colour(s)



EO 5140-1B2B3B LED ROD

- Ceiling mounted luminaire for LED SPOT module, maximum 3x4 023 lumens
- CRI of 90
- MacAdam Ellipse : 2 SDCM
- Available in 2 700 K, 3 000 K, 3 500 K and 4 000 K
- 50 000 hours lamp life (L80B10)
- Luminous efficiency of system up to 161,5 lm/W
- Springs in pressure for easier installation
- Ring made of die-cast aluminium
- Aluminium reflective optics
- **Weight** : Approx. 1,3 kg
- **Driver(s)** : Fixed, Dimmable DALI, Casambi, Connect
- **Option(s)** : Fast connector (CORD)
- Photobiological risk group 1

Driver(s)



Standards

Class II | IP 20 | 650° | RG1

Beam(s)



Performance of specialized lighting modules

| ITEM | SECTION | POWER | CONSUMPTION | LUMINOUS FLUX | SYSTEM EFFICIENCY | COLOUR TEMPERATURE | CRI | EFFICIENCY ENERGY CLASS |
|-----------------------------|----------|----------|-------------|---------------|-------------------|--------------------|-----|-------------------------|
| EO 5140-1B LED ROD 3600-927 | Bakery | 24,1 W | 26,8 W | 3567 lumens | 133,2 lm/W | 2700 K | 90 | - |
| EO 5140-1B LED ROD 2700-930 | Butchery | 29,4 W | 32,7 W | 2733 lumens | 83,7 lm/W | 3000 K | 90 | - |
| EO 5140-2B LED ROD 3600-927 | Bakery | 2x24,1 W | 2x26,8 W | 3567 lumens | 133,2 lm/W | 2700 K | 90 | - |
| EO 5140-2B LED ROD 2700-930 | Butchery | 2x29,4 W | 2x32,7 W | 2733 lumens | 83,7 lm/W | 3000 K | 90 | - |
| EO 5140-3B LED ROD 3600-927 | Bakery | 3x24,1 W | 3x26,8 W | 3567 lumens | 133,2 lm/W | 2700 K | 90 | - |
| EO 5140-3B LED ROD 2700-930 | Butchery | 3x29,4 W | 3x32,7 W | 2733 lumens | 83,7 lm/W | 3000 K | 90 | - |

High efficiency performance of the components (HE) IRC 90

| ITEM | POWER | CONSUMPTION | LUMINOUS FLUX | SYSTEM EFFICIENCY | COLOURS TEMPERATURE | CRI | EFFICIENCY ENERGY CLASS |
|--------------------------------|----------|-------------|---------------|-------------------|---------------------|-----|-------------------------|
| EO 5140-1B LED ROD HE 3000-930 | 16,8 W | 18,7 W | 3010 lumens | 161,3 lm/W | 3000 K | 90 | E |
| EO 5140-1B LED ROD HE 3000-935 | 16,8 W | 18,7 W | 2991 lumens | 160,2 lm/W | 3500 K | 90 | E |
| EO 5140-1B LED ROD HE 3000-940 | 16,8 W | 18,7 W | 3015 lumens | 161,5 lm/W | 4000 K | 90 | E |
| EO 5140-1B LED ROD HE 4000-930 | 24,1 W | 26,8 W | 4016 lumens | 150 lm/W | 3000 K | 90 | E |
| EO 5140-1B LED ROD HE 4000-935 | 24,1 W | 26,8 W | 3991 lumens | 149 lm/W | 3500 K | 90 | E |
| EO 5140-1B LED ROD HE 4000-940 | 24,1 W | 26,8 W | 4023 lumens | 150,2 lm/W | 4000 K | 90 | E |
| EO 5140-2B LED ROD HE 3000-930 | 2x16,8 W | 2x18,7 W | 2x3010 lumens | 161,3 lm/W | 3000 K | 90 | E |
| EO 5140-2B LED ROD HE 3000-935 | 2x16,8 W | 2x18,7 W | 2x2991 lumens | 160,2 lm/W | 3500 K | 90 | E |
| EO 5140-2B LED ROD HE 3000-940 | 2x16,8 W | 2x18,7 W | 2x3015 lumens | 161,5 lm/W | 4000 K | 90 | E |
| EO 5140-2B LED ROD HE 4000-930 | 2x24,1 W | 2x26,8 W | 2x4016 lumens | 150 lm/W | 3000 K | 90 | E |
| EO 5140-2B LED ROD HE 4000-935 | 2x24,1 W | 2x26,8 W | 2x3991 lumens | 149 lm/W | 3500 K | 90 | E |
| EO 5140-2B LED ROD HE 4000-940 | 2x24,1 W | 2x26,8 W | 2x4023 lumens | 150,2 lm/W | 4000 K | 90 | E |
| EO 5140-3B LED ROD HE 3000-930 | 3x16,8 W | 3x18,7 W | 3x3010 lumens | 161,3 lm/W | 3000 K | 90 | E |
| EO 5140-3B LED ROD HE 3000-935 | 3x16,8 W | 3x18,7 W | 3x2991 lumens | 160,2 lm/W | 3500 K | 90 | E |
| EO 5140-3B LED ROD HE 3000-940 | 3x16,8 W | 3x18,7 W | 3x3015 lumens | 161,5 lm/W | 4000 K | 90 | E |
| EO 5140-3B LED ROD HE 4000-930 | 3x24,1 W | 3x26,8 W | 3x4016 lumens | 150 lm/W | 3000 K | 90 | E |
| EO 5140-3B LED ROD HE 4000-935 | 3x24,1 W | 3x26,8 W | 3x3991 lumens | 149 lm/W | 3500 K | 90 | E |
| EO 5140-3B LED ROD HE 4000-940 | 3x24,1 W | 3x26,8 W | 3x4023 lumens | 150,2 lm/W | 4000 K | 90 | E |